

Roller

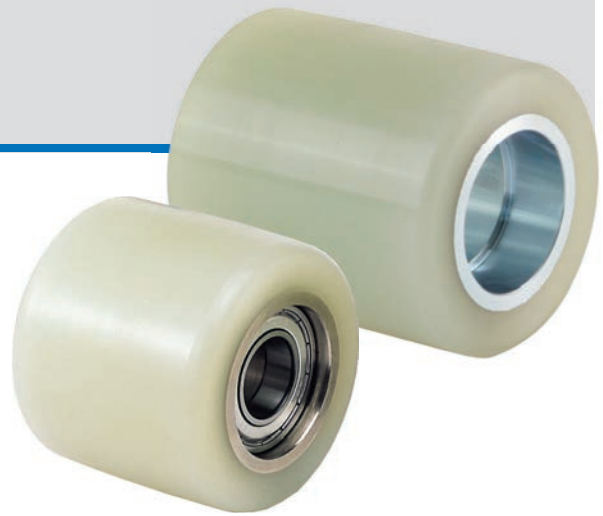
ROLLER series



380~750kg



-10~90°C



High-quality roller wheel

- Robust structure by using steel cores
- High-quality polyurethane + excellent bonding force
- Strong waterproofing and corrosion resistance
- Excellent mechanical property
- Use temperature : -10 ~ +90°C

Series	Wheel types	Description	Wheel Dia(D) mm	Wheel width(W) mm	Hub length(L) mm	Axle bore(A) mm	Load capacity Kg	Bearing type
HURD	HURD-80-06017	- Cast polyurethane(Shore A95) - Steel core - Two ball bearings	80	55	60	17	380	6005 ZZ
	HURD-80-07017		80	65	70	17	450	6005 ZZ
	HURD-80-10017		80	95	100	17	650	6005 ZZ
	HURD-80-06020		80	55	60	20	380	6005 ZZ
	HURD-80-07020		80	65	70	20	450	6005 ZZ
	HURD-80-10020		80	95	100	20	650	6005 ZZ
	HURD-85-06017		85	55	60	17	450	6005 ZZ
	HURD-85-07017		85	65	70	17	520	6005 ZZ
	HURD-85-08017		85	75	80	17	600	6005 ZZ
	HURD-85-09017		85	85	90	17	670	6005 ZZ
	HURD-85-10017		85	95	100	17	750	6005 ZZ
	HURD-85-06020		85	55	60	20	450	6005 ZZ
	HURD-85-07020		85	65	70	20	520	6005 ZZ
	HURD-85-08020		85	75	80	20	600	6005 ZZ
	HURD-85-09020		85	85	90	20	670	6005 ZZ
	HURD-85-10020		85	95	100	20	750	6005 ZZ